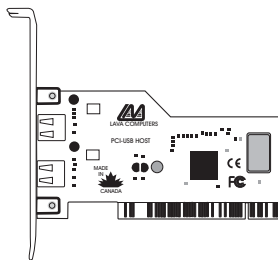


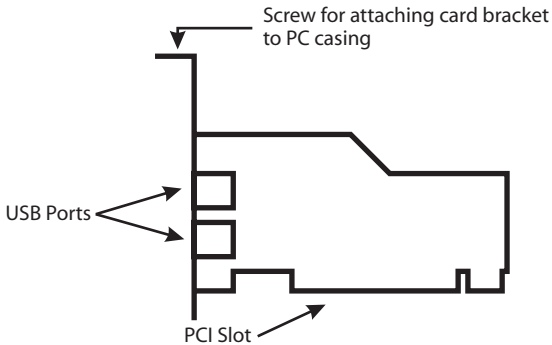
Lava USB 1.1 Host Adapter Installation Manual



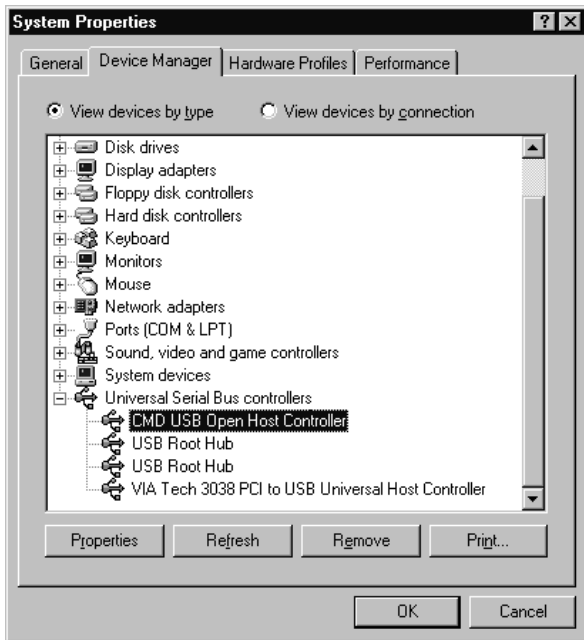
Rev. B00

PC Installation

1. Before opening the casing of your computer, make sure that all power is off.
2. Open the case, locate an unused PCI slot and insert the USB 1.1 Host Adapter into it. Ensure that it is well seated. Replace the machine's cover.
3. Turn the PC on. When Windows 98SE/Me/2000/XP starts, it will find a USB 1.1 Host Adapter or it will ask you for the driver for this device. Proceed to "Software Installation."



4. To check the installation of the USB 1.1 Host Adapter go to Control Panel | System|Device Manager under Ports, as shown below.



Software Installation

1. A dialog box like the one below will tell you that Windows has detected your new hardware:



Click 'Next>'.

2. Select 'Search for the best driver for your device.' Click 'Next>'.



3. You can specify or browse for a location on your Windows CD. When the location is specified, click 'Next>'.



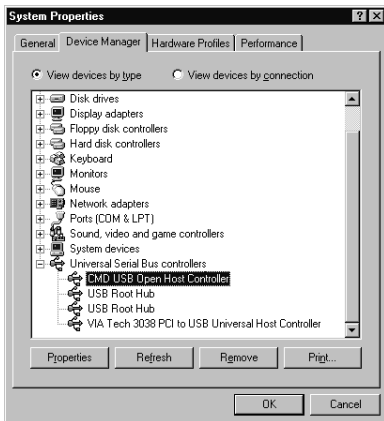
4. Click 'Next>'.



5. Windows will install the driver from the Windows CD. When Windows finishes installing the driver, click 'Finish.'



6. Click 'Device Manager' and click 'OK'. You will see 'Universal Serial Bus controller' in System Properties.



Macintosh Installation

1. Before opening the casing of your computer, make sure that all power is off.
2. Open the case, locate an unused PCI slot and insert the USB 1.1 Host Adapter into it. Ensure that it is well seated. Close the case.
3. Turn the Mac on. When the operating system starts, it will automatically find the USB 1.1 Host Adapter.
4. To check whether the USB 1.1 Host was properly installed, go to 'Apple Menu,' 'Apple System Profiler.'
5. Select the 'Devices and Volumes' tab and check for the USB 1.1 Host.

Release Notes:

1. Windows 95 and Windows 98 may need operating system upgrade patches to have USB 1.1 support. Lava recommends using Windows 98SE or later. See www.windowsupdate.com for Windows upgrades. Windows users can determine whether their systems have USB 1.1 support by running the USBREADY software available from www.lavalink.com.
2. Macintosh users may need operating system upgrades to have USB 1.1 support. See www.macupdate.com for Mac OS patches.
3. USB 1.1 is supported in Linux kernel 2.4 and later.
4. USB 2.0 devices will operate at USB 1.1 speeds when connected to a USB 1.1 Host Adapter.

Lava Technical Support

9:00 am to 5:30 pm Monday to Friday (Eastern Time)

Tel: +416 674-5942

Fax: + 416 674-8262

E-mail: tech@lavalink.com

Internet: www.lavalink.com



Lava Computer MFG Inc.



This device complies with part 15 of the FCC Rules. Operation is subject to the following conditions: (1) This device may not cause harmful interference, and (2) this device must accept any interference received, including interference that may cause undesired operation.

Lava Computer MFG Inc. 908 Niagara Falls Blvd. #629. North Tonawanda NY 14120-2060

