

Entry-Level SimulCharge™ Adapters for Samsung Micro USB Tablets

LAVA's nSTS product family is an Enterprise line of adapters that provide compatible Samsung Micro USB tablets with simultaneous charging and access to data (SimulCharge™) and Docking Detect technology for a consistent connection between the adapter and mobile device.

TECHNOLOGY HIGHLIGHTS

- **SimulCharge:** provides a mobile device with simultaneous charging and access to data.
- **Docking Detect:** ensures the "greeting" protocols between the SimulCharge™ adapter and mobile device are executed correctly and consistently every time they are connected. This allows the adapter to be a plug-and-play technology that ensures the mobile device always operates in USB Host mode.

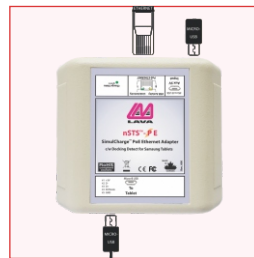
PoE Adapters

Power over Ethernet provides up to 10.4 watts of power and wired network connectivity over the same Ethernet cable. LAVA's PoE SimulCharge™ adapters can be installed up to 328 feet (100 meters) away from the power source. You don't need to hire an electrician as the installation does not involve electrical cables going into an AC power source. If no PoE-capable network switch, you can invest in a third-party PoE injector which can turn a regular LAN connection from a modem or router into PoE.



nSTS-P2UE
SimulCharge™, PoE, Ethernet, 2 x USB
Adapter for Samsung Micro USB Tablets

- Power over Ethernet (Class 0)
- 2 USB-A ports for peripherals
- Wired Networking (10/100) Ethernet support
- Allow for installation up to 328 ft (100 m) from power source

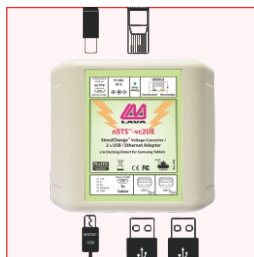


nSTS-PE
SimulCharge™, PoE, Ethernet Adapter for
Samsung Micro USB Tablets

- Power over Ethernet (Class 0)
- Wired Networking (10/100) Ethernet support
- Allows for installation up to 328 ft (100 m) from power source

Voltage Converter Adapters

Voltage converter units allow the adapter to be placed up to 50 feet (15 meters) away from the AC power source. The adapter features a Barrel Jack port for a DC power supply. The built-in voltage converter allows the adapter to receive an input voltage between 9 and 36 volts and steps it down to a device-friendly 5 volts for use with the mobile device. They are ideal for automotive or battery-based applications. The low DC voltage also allows these adapters to operate in permanent and semi-permanent installations while being fully compliant with local electrical codes. This eliminates the expense of hiring an electrician and the requirement of dedicated AC cable routing and installation.



nSTS-vc2UE
SimulCharge™, Voltage Converter,
Ethernet, 2 x USB Adapter for Samsung
Micro USB Tablets

- Takes 9-36V DC power supply with barrel jack connector
- 2 USB-A ports for peripherals
- Wired Networking (10/100) Ethernet support
- Allows for installation up to 50 ft (15 m) from power source



nSTS-vcE
SimulCharge™, Voltage Converter, Ethernet
Adapter for Samsung Micro USB Tablets

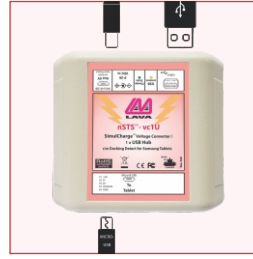
- Takes 9-36V DC power supply with barrel jack connector
- Wired Networking (10/100) Ethernet support
- Allows for installation up to 50 ft (15 m) from power source



nSTS-vc3U

SimulCharge™, Voltage Converter, 3 x USB Adapter for Samsung Micro USB Tablets

- Takes 9-36V DC power supply with barrel jack connector
- 3 USB-A ports for peripherals
- Allows for installation up to 50 ft (15 m) from power source



nSTS-vc1U

SimulCharge™, Voltage Converter, 1 x USB Adapter for Samsung Micro USB Tablets

- Takes 9-36V DC power supply with barrel jack connector
- 1 USB-A port for peripherals
- Allows for installation up to 50 ft (15 m) from power source

5-Volt DC Adapters

Units with a 5-volt power input allow the mobile device to be up to 6 feet (2 meters) away from the power supply. This is the standard power option for mobile devices. Any regulated 5-volt, 2-amp (DCP-capable) power supply can be used. Though, it is recommended you use the charger that came with the mobile device.



nSTS-2UE

SimulCharge™, Ethernet, 2 x USB Adapter for Samsung Micro USB Tablets

- 5-volt DC power (use mobile device's charging cable)
- 2 USB-A ports for peripherals
- Wired Networking (10/100) Ethernet support



nSTS-E

SimulCharge™, Ethernet Adapter for Samsung Micro USB Tablets

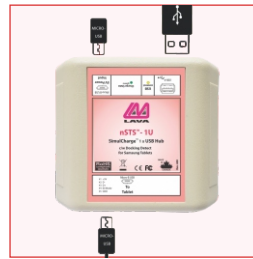
- 5-volt DC power (use mobile device's charging cable)
- Wired Networking (10/100) Ethernet support



nSTS-3U

SimulCharge™, 3 x USB Adapter for Samsung Micro USB Tablets

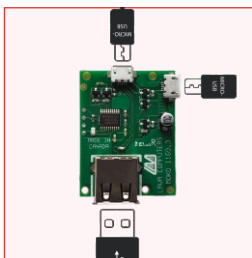
- 5-volt DC power (use mobile device's charging cable)
- 3 USB-A ports for peripherals



nSTS-1U

SimulCharge™, 1 x USB Adapter for Samsung Micro USB Tablets

- 5-volt DC power (use mobile device's charging cable)
- 1 USB-A port for peripherals



nSTS-1U-OEM

SimulCharge™, 1 x Board-Only USB Adapter for Samsung Micro USB Tablets

- 5-volt DC power (use mobile device's charging cable)
- 1 USB-A port for peripheral
- Compact (can be incorporated directly into system)

Comparison Chart

Check out our comparison chart to see what nSTS product is right for you. LAVA SimulCharge™ adapters come in various configurations, including Ethernet and multiple USB-A ports for peripherals. They are also available in three different power options: Power over Ethernet (PoE), Voltage Converter power and the standard 5V DC power.

Adapter	PoE	Ethernet	USB-A Ports	Voltage Converter	5-Volt DC Charging
nSTS-P2UE	●	●	● 2x		● AUX
nSTS-PE	●	●			● AUX
nSTS-vc2UE		●	● 2x	●	
nSTS-vcE		●		●	
nSTS-vc3U			● 3x	●	● AUX
nSTS-vc1U			● 1x	●	● AUX
nSTS-2UE		●	● 2x		●
nSTS-E		●			●
nSTS-3U			● 3x		●
nSTS-1U			● 1x		●
nSTS-1U-OEM			● 1x		●