

Ether-Serial Link 8™ Advanced Features

This document describes the advanced configuration features of the Ether-Serial Link 8™. It covers:

1. Ether-Serial Link 8™ port modes
 - Driver Mode (Default mode)
 - Raw Server Mode
 - Raw Client Mode
 - RFC 2217 Mode
 - Data Connect Mode
 - RAS Server Mode
 - Ethernet Modem Mode
 - Disabled Mode
2. WAN Port configuration
3. Passwords
4. Port access restrictions
5. Advanced serial port settings (buffer management)
6. Port reset
7. Device reboot
8. Reset to factory defaults
9. Subnet configuration with the Ether-Serial Link 8™
10. Re-establishing a TCP connection with the Ether-Serial Link 8™
11. Configuring the Ether-Serial Link 8™ using Telnet

1. Ether-Serial Link™ port modes

The Ether-Serial Link 8™ converts serial port data to and from TCP/IP packets over Ethernet. Each Ether-Serial Link 8™ port exchanges TCP/IP packets on its own unique TCP port (called the "Local Port" in the Properties dialog box). Each serial port on an Ether-Serial Link 8™ device can be configured independently to perform this conversion in one of the serial port modes discussed below:

Driver Mode (Default mode)

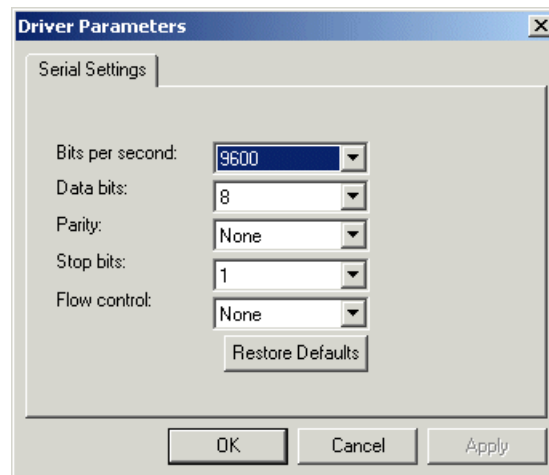
This mode enables the physical port of an Ether-Serial Link 8™ to communicate directly with the serial port API of a supported operating system as a local COM port. In this mode, authorized users can set bits per second, data bits, parity, stop bits, and flow control port-by-port, or the port will accept its serial port settings from the application/operating system that is accessing it. Driver mode is the factory default mode when an Ether-Serial Link 8™ is installed.

When installed on a LAN, an Ether-Serial Link 8™ in Driver Mode has all the functionality of an internally installed serial port. All data lines and control lines are active in Driver mode.

When installed on a WAN or the Internet, the serial port of an Ether-Serial Link 8™ gains enormous flexibility and power. To use an Ether-Serial Link 8™ port on a remote network:

1. configure the IP address and TCP port of the WAN connection in the *Ether-Link Manager*™ to match the gateway IP address of the remote network,
2. map the IP address and TCP port of the remote gateway to the IP address of the Ether-Serial Link 8™, and
3. configure the Ether-Serial Link 8™ itself for Driver Mode.

Applications: General serial port access from applications running on a PC.



Driver Mode operation with Host PC security and firewalls:

When first installing *Ether-Link Manager*™ and driver onto the host PC, the security and firewall settings may have to be adjusted or turned off to allow the application and driver to use COM port and network resources in order to load the software.

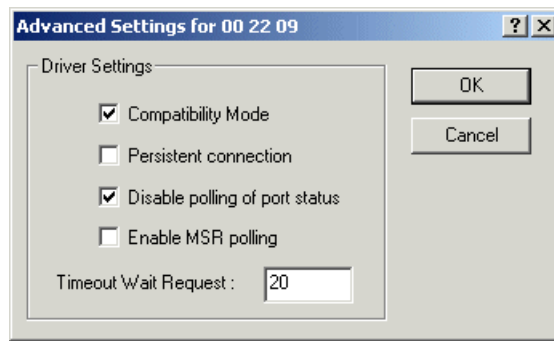
The *Ether-Link Manager*™ (and firmware upgrade utilities) use UDP communications, which includes UDP broadcast packets. Note: some LAN routers may block some UDP packets. In such instances an Ethernet crossover cable can be used from the host PC to connect directly to the device that is to be configured.

The *Ether-Link Manager*™ utility can be used to locate any LAVA Ether-Serial Link™ type device on the LAN, regardless of the IP address or DHCP setting. This is very convenient if the IP and other settings of the unit are unknown.

Virtual port (driver) settings

The Ether-Serial Link 8™ virtual port allows a serial port on an Ether-Serial Link 8™ to be used in same manner as a local serial port when the port is configured in Driver Mode (described above). In this state, the driver for the virtual port

converts local serial port accesses into TCP/IP packets to be exchanged with Ether-Serial Link 8™ ports.



Compatibility Mode. The Ether-Serial Link 8™ virtual port normally operates in high performance mode. Compatibility mode supports applications that require a more accurate simulation of a local serial port. The need for Compatibility mode is indicated when data being sent to the remote serial port is lost or sent repeatedly.

When this option is enabled, the Ether-Serial Link 8™ Windows driver sends a "write request" with the data packet to the Ether-Serial Link 8™. The Ether-Serial Link 8™ signals the completion of the "write request" only after the last data character has been output to the UART. The "write request" is handled in the same way as a "write request" under Windows. This ensures that all the characters that were sent to the Ether-Serial Link 8™ serial port are in the UART and are output, before the next data character is sent by the driver from the host PC.

Persistent connection. This setting maintains a persistent connection when the client station's connection is broken to the unit, then re-established. This setting is accessed through Window's Device Manager | Ports (COM & LPT).

When this option is enabled the communication link from the physical serial port on the Ether-Serial Link 8™ to the COM port that is enumerated on the PC will be re-established automatically, in event that the power is cycled, the Ether-Serial Link 8™ is rebooted, or the port is reset.

To most effectively use this feature, match ALL the default serial operating parameters to the parameters that are used in the communications at the serial port and COM ports. Doing so will minimize delay in reconnection as the reconnection procedure uses default parameters first, then the settings that are actually in use.

Disable polling of port status. Polling of port status can be disabled. This is useful when a software application accessing the remote serial port repeatedly polls to check port status, slowing access to the remote port. This setting is accessed through Window's Device Manager | Ports (COM & LPT).

COM port applications may send multiple-repeated status polls to the COM port UART. Status polls are passed to the Ether-Serial Link 8™ serial port UART firmware. These status polls will show up as TCP/IP packets that are exchanged on the LAN between the Windows driver and the Ether-Serial Link 8™. When the option to suppress the status polls is enabled, the Windows driver will reply to the application status polls using the last set of stored parameters in the driver. Status polls will not be sent to the Ether-Serial Link 8™ over the LAN. The COM port status changes that are made in the Ether-Serial Link 8™ are updated and stored in the driver memory, as and when they occur.

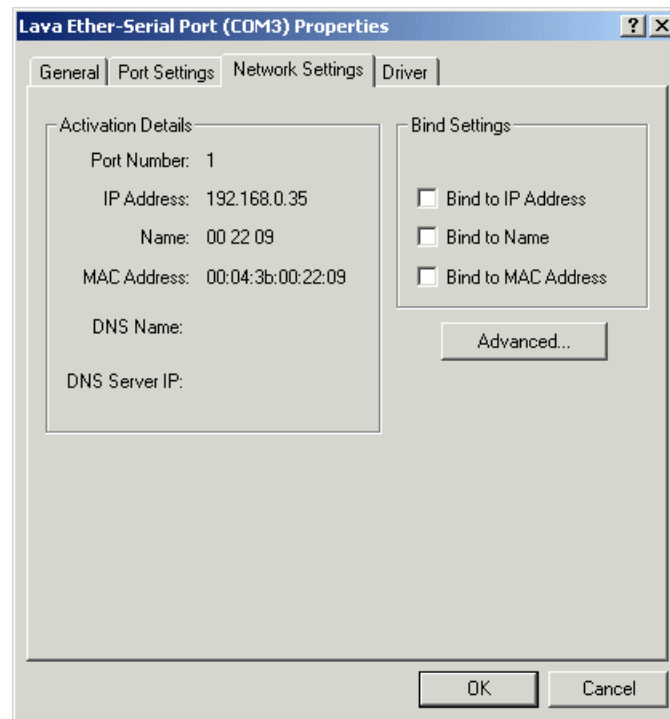
Enable MSR polling. Some applications repeatedly poll the Modem Status Register (MSR) of a device to see whether that register is set. This activity may significantly slow data transfer over a WAN and add traffic to a network. By default, the Ether-Serial Link 8™ will obtain the state of the remote MSR and present it to applications seeking this information, without repeatedly polling the MSR. When the MSR's state changes, this information will be conveyed by the Ether-Serial Link 8™. Selecting to enable MSR polling will allow applications to directly poll the MSR on each polling request.

Timeout Wait Request. This setting, specified in seconds, allows a user to set the length of time the Ether-Serial Link 8™ will wait before dropping a connection if there is no response. This setting will therefore serve to limit the time a "persistent" connection is maintained.

Virtual port (driver) bindings

Background. Activating an Ether-Serial Link 8™ port in effect creates a "virtual" driver port that is associated with a particular physical serial port on a particular Ether-Serial Link 8™. When a driver virtual port is opened, a connection must be established to the appropriate Ether-Serial Link 8™. In normal operation, that connection is made to the IP address assigned to the Ether-Serial Link 8™ at the time the activation was created. However, on many Ethernet/IP networks, the IP address of individual devices may change (for example, when a DHCP server assigns addresses). This address reassignment will cause virtual ports to fail or make unintended connections to unintended Ether-Serial Link 85™.

Therefore, Ether-Serial Link 8s™ are designed with the ability to "find" an Ether-Serial Link 8™ port based on a "binding". A port binding is a network identification of the target Ether-Serial Link 8™ that must match before a driver port will initiate a connection. Bindings may be made to the MAC address, Name, or IP address of the associated device.



Binding to MAC Address. MAC addresses are unique and permanent identifiers for Ethernet devices, and are assigned to devices when they are manufactured. Binding to an Ether-Serial Link 8™'s MAC address ensures that a virtual port always makes a connection to that same physical device, even if the device's IP address or Name have changed. Binding to MAC address provides security and reliability. Virtual ports will only connect to that single particular physical device.

Binding to Name. Device Name is a 15-character field assigned by the Ether-Serial Link 8™ system administrator. Binding a virtual port to a device's Name will ensure that a connection will be made to an actual port if a device can be found with the name specified in the "Bindings" dialog box. This port may be on a different physical device from the one with which the virtual port was initially communicating (that is, a device with a different MAC address), or it may be a port on the same physical device but with a changed IP address, or both. Binding to a device's Name provides reliability and dynamic connections. Virtual ports will connect to the device with a name that matches the binding. If a particular device is replaced with a new one with the same assigned Name, the virtual port will establish the connection. Also, Names can be reassigned at any time to cause client PCs to connect to new devices without being reconfigured.

Binding a virtual port to a Name allows that virtual port to be identified on the network with a more representative mnemonic than an IP address or MAC address. For example, a security system might name its virtual port targets "Camera1", "Camera2", "CardReader6", and so forth.

Binding to IP Address. The IP address of a network device is assigned by either the Ether-Serial Link 8™ system administrator or through a DHCP server. Binding a virtual port to an IP address will force that virtual port to attempt a connection to any device with that particular IP address only. Binding to IP address provides dynamic connections. Device IP addresses can be reassigned at any time to cause client PCs to form new connections without being reconfigured. Note: when no bindings have been stipulated, a virtual port is implicitly bound to an IP address because such an address is required to make a connection.

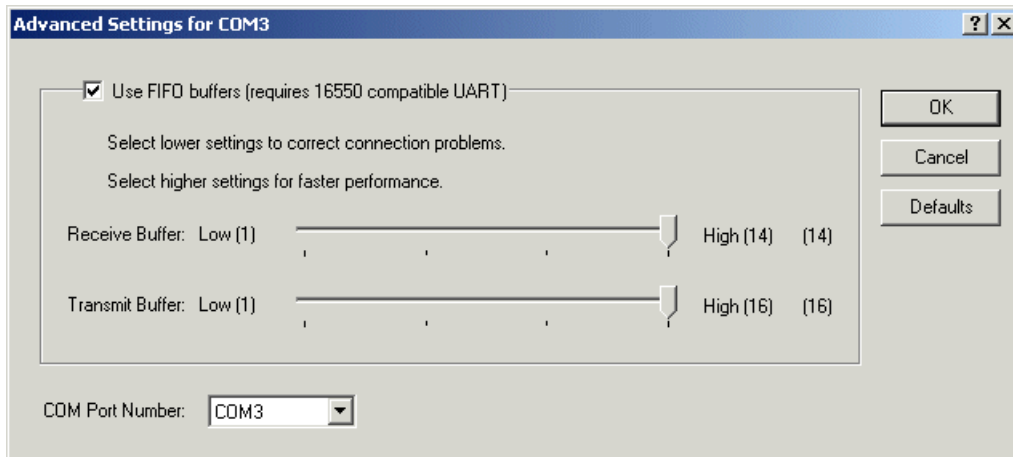
Binding to more than one parameter. Usually, only one degree of binding is sufficient for an individual virtual port to achieve the goals of robust communication and flexibility. It is however also possible to bind a virtual port to more than one parameter. Doing so requires careful consideration of the implications of maintaining connectivity. If multiple bindings are selected for one port, *all* individual binding parameters must match for a connection to be made. For example, enabling both IP address and MAC address bindings for a virtual port would cause that virtual port to find a particular physical device by MAC address, but make a connection only if the device's IP address also matched the binding setting.

Resetting registry information in Windows

Under Windows you may need to use the line command "arp -d *" to clear the OS registry of the previous IP and MAC relationship. This may become apparent when first using and setting up a device with the factory default IP settings.

Virtual port COM number assignment

By default, an Ether-Serial Link 8™ virtual serial port is assigned to the next available COM number when it is activated. This COM number assignment can be reassigned to any unused COM number from 1 to 256.



Transmit FIFO buffer configuration

Each serial port of an Ether-Serial Link 8™ has a first-in first-out (FIFO) buffer for transmitting data and a FIFO buffer for receiving data.

Transmit FIFO buffers are configurable and can buffer from 1 to 16 characters in the UART, for output to the serial port. Receive FIFO buffer levels are fixed at 8 characters.

Some serial devices, when they are not able to accept data from the serial port, will send an XOFF character to that port. Upon receipt of the XOFF character, the Ether-Serial Link 8™ will output the remaining characters in the port's transmit FIFO buffer. The Ether-Serial Link 8™ will then only accept more characters from the PC driver after an XON has been issued by the serial device.

If the nature of a serial device is such that it cannot accept buffered characters after sending an XOFF character, the user of an Ether-Serial Link 8™ can set the transmit buffer level to some low value such as 1 or 2 characters, to overcome the situation where data is sent to a device that is unable to accept it. This may be necessary for POS printers and some CNC devices or PLCs, for example.

The transmit FIFO buffer level can be set using either the *Ether-Link Manager*™ (Port Settings | Advanced), or the Telnet configuration interface.

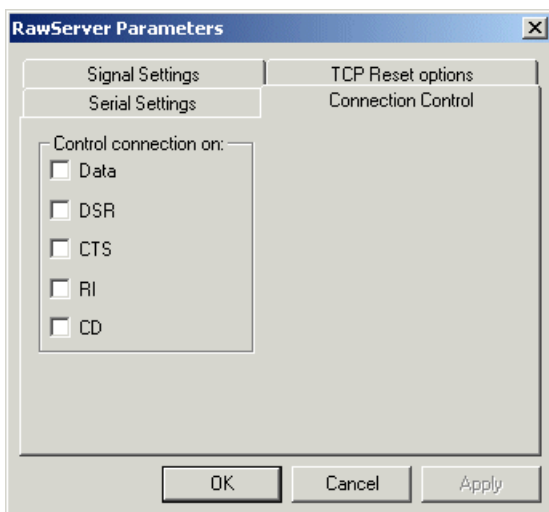
Raw Server Mode

This mode is used to establish a raw TCP connection to an Ether-Serial Link 8™ port. The physical port on the Ether-Serial Link 8™ is made available as a network resource with a specified IP address and port number. In this mode, authorized users can set bits per second, data bits, parity, stop bits, and flow control port-by-port, to match the requirements of the Data Terminal Equipment (DTE) connected to the physical Ether-Serial Link 8™ port.

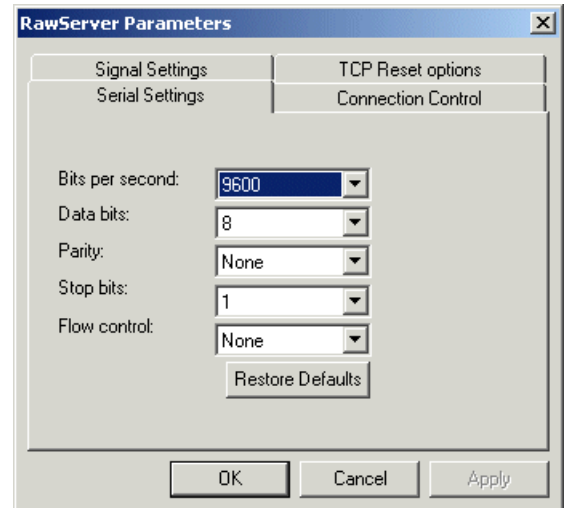
In Raw Server mode only transmit (Tx) and receive (Rx) lines are active. However, control lines can be triggered by the TCP connection being established. Under the "Signal Settings" tab shown below, the user can set how the control lines are to react when a TCP connection is established.

The TCP connection can be set to close on two conditions: a status error at the serial port (such as a parity error, buffer overrun, cable disconnection, etc.), or when a BREAK is sent to the serial port. By default these conditions are disabled.

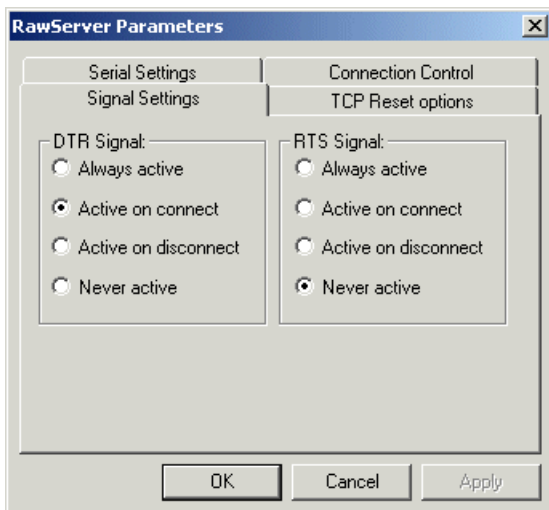
Applications: Remote monitoring, security systems.



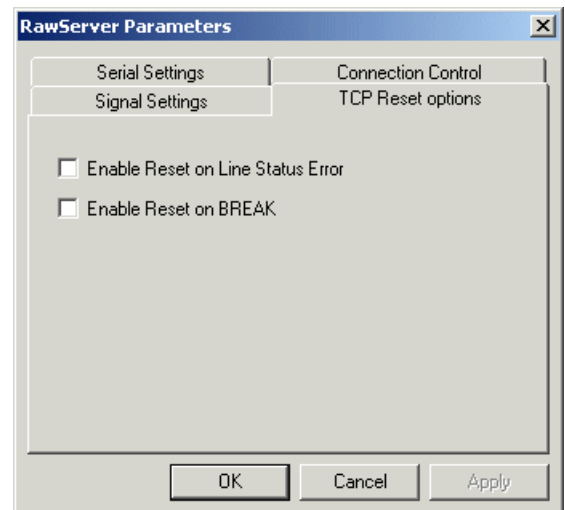
The "RawServer Parameters" dialog box is shown with the "Signal Settings" tab selected. The "Serial Settings" sub-tab is active, displaying a list of control lines to be monitored: Data, DSR, CTS, RI, and CD. Each line has an unchecked checkbox next to it. The "TCP Reset options" and "Connection Control" sub-tabs are visible but not selected. The "OK", "Cancel", and "Apply" buttons are at the bottom.



The "RawServer Parameters" dialog box is shown with the "Serial Settings" sub-tab selected. It displays configuration fields for the serial connection: "Bits per second" (9600), "Data bits" (8), "Parity" (None), "Stop bits" (1), and "Flow control" (None). Each field has a dropdown menu. A "Restore Defaults" button is located below the "Flow control" field. The "OK", "Cancel", and "Apply" buttons are at the bottom.



The "RawServer Parameters" dialog box is shown with the "Connection Control" sub-tab selected. It displays two sections: "DTR Signal" and "RTS Signal". Each section has four radio button options: "Always active", "Active on connect", "Active on disconnect", and "Never active". In both sections, "Active on connect" is selected. The "OK", "Cancel", and "Apply" buttons are at the bottom.



The "RawServer Parameters" dialog box is shown with the "TCP Reset options" sub-tab selected. It displays two checkboxes: "Enable Reset on Line Status Error" and "Enable Reset on BREAK". Both checkboxes are unchecked. The "OK", "Cancel", and "Apply" buttons are at the bottom.

Message Status Settings (web browser interface only):

The screenshot shows a web browser window titled "LAVA Ether Serial Link Configuration :: Raw Server Mode Serial Port Message Status Settings - Microsoft Internet Explorer". The browser's menu bar includes File, Edit, View, Favorites, Tools, and Help. The main content area features the LAVA logo at the top center, with a "log out" link to its right. Below the logo, the title "Raw Server Mode Serial Port 1 Message Status Settings" is displayed. A form contains a "Local TCP port:" label and a text box with the value "4098". Below this are two identical sections. The first section is titled "Serial Port TCP Connection STATUS" and contains a text box for a message (20 HEX chars MAX) and a checkbox labeled "Message required". The second section is titled "Serial Port Permission NOT MATCHED" and also contains a text box for a message (20 HEX chars MAX) and a checkbox labeled "Message required". At the bottom of the form are "Submit" and "Exit without changes" buttons. Below the buttons, contact information for LAVA Technical Support is provided: "www.lavalink.com", "Tel: 416.674.5942, Fax: 416.674.8262", and "E-mail Tech Support: tech@lavalink.com". The browser's status bar at the bottom shows "Done" and "Internet".

In Raw Server mode the device can be configured to provide status messages in response to either or both of two conditions: connection and port permissions not matched.

The "TCP Connection STATUS" message can be used to provide a welcome or greeting message when a client connects to the Ether-Serial Link 8™.

The "Permission NOT MATCHED" message can be used to provide a message about the status of the device attached to the serial port, in the event that conditions for connection to that device are not met. These conditions are specified in the Raw Server Mode Serial Port Settings dialog, "PERMIT CONNECTION ON:" options. For example, if a printer is attached but not online when the application attempts to print, a "Printer offline" message could be sent.

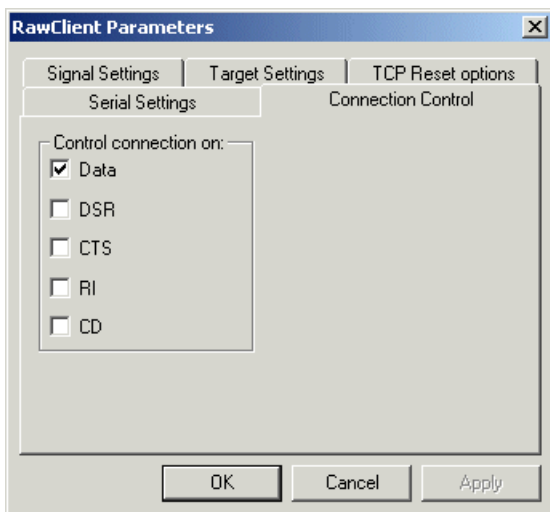
Raw Client Mode

This mode is used to establish a raw connection to the Ether-Serial Link 8™. The physical port on the Ether-Serial Link 8™ is configured to initiate a connection to a pre-defined IP address and port number, specified by an authorized user of that port in the "Target Settings" dialog box. In this mode, authorized users set bits per second, data bits, parity, stop bits, and flow control port-by-port, to match the requirements of the Data Terminal Equipment (DTE) connected to the physical Ether-Serial Link 8™ port.

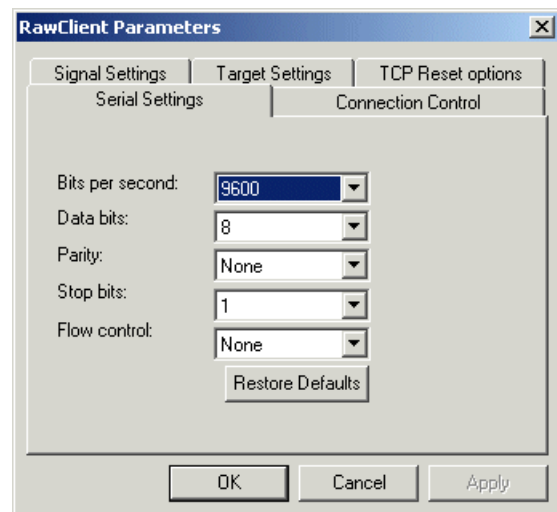
In Raw Client mode only transmit (Tx) and receive (Rx) lines are active. However, operating as a client, the Ether-Serial Link 8™ can be configured to open a connection to the target IP address and port when it detects one or more of the following line conditions: data, DSR, CTS, RI, or CD. Users can configure which of these triggers will be in effect for any Ether-Serial Link 8™ port set in this mode in the "Connection Control" dialog box. "Signal Settings" are also settable by the user, as described in Raw Server mode.

The TCP connection can be set to close on two conditions: a status error at the serial port (such as a parity error, buffer overrun, cable disconnection, etc.), or when a BREAK is sent to the serial port. By default these conditions are disabled.

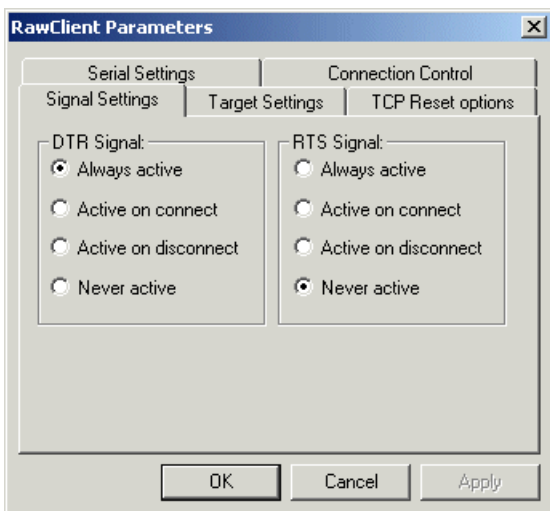
Application: Remote control.



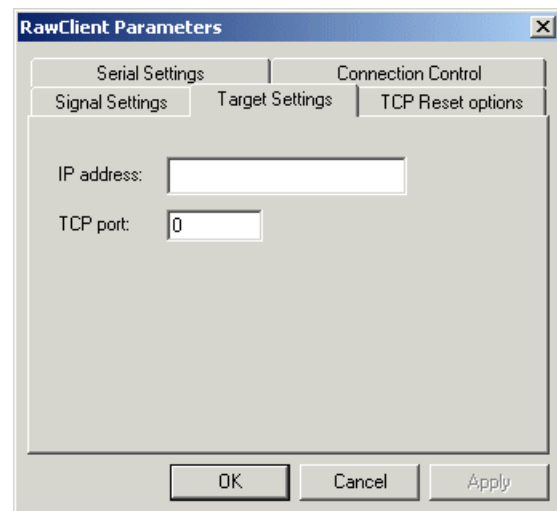
The "RawClient Parameters" dialog box is shown with the "Signal Settings" tab selected. The "Serial Settings" sub-tab is active. Under "Control connection on:", the "Data" checkbox is checked, while "DSR", "CTS", "RI", and "CD" are unchecked. The "OK", "Cancel", and "Apply" buttons are at the bottom.



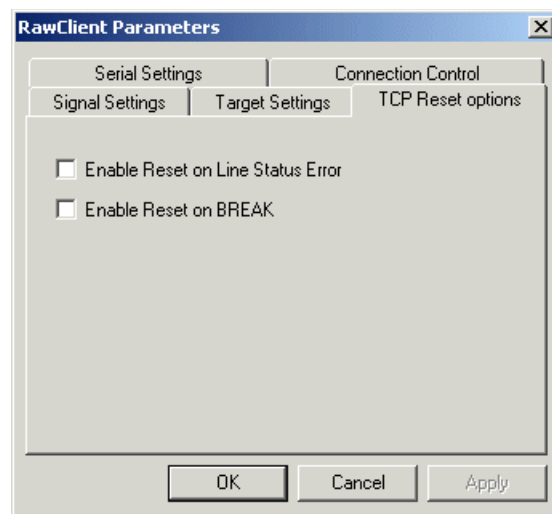
The "RawClient Parameters" dialog box is shown with the "Serial Settings" sub-tab selected. The "Connection Control" sub-tab is active. The settings are: "Bits per second:" set to 9600, "Data bits:" set to 8, "Parity:" set to None, "Stop bits:" set to 1, and "Flow control:" set to None. A "Restore Defaults" button is located below the flow control dropdown. The "OK", "Cancel", and "Apply" buttons are at the bottom.



The "RawClient Parameters" dialog box is shown with the "Connection Control" sub-tab selected. The "Signal Settings" sub-tab is active. Under "DTR Signal:", "Always active" is selected. Under "RTS Signal:", "Never active" is selected. The "OK", "Cancel", and "Apply" buttons are at the bottom.



The "RawClient Parameters" dialog box is shown with the "Target Settings" sub-tab selected. The "Signal Settings" sub-tab is active. The "IP address:" field is empty, and the "TCP port:" field is set to 0. The "OK", "Cancel", and "Apply" buttons are at the bottom.

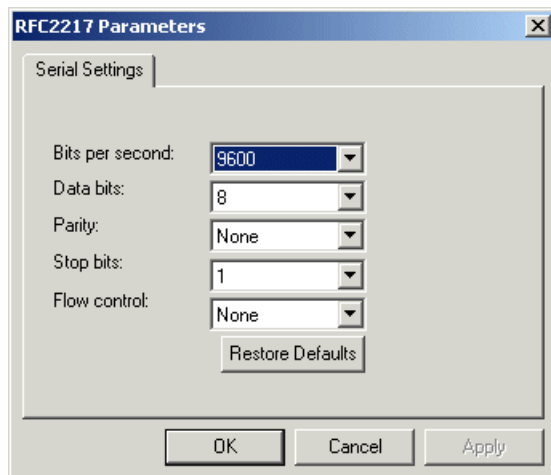


RFC2217 Mode

Users who want to communicate with an Ether-Serial Link 8™ across gateways or routers can configure a port on an Ether-Serial Link 8™ to operate in RFC 2217 mode, allowing serial port configuration commands and serial data to be sent to an Ether-Serial Link 8™ using the RFC 2217 framework for serial port control over Telnet. Data and control lines are transferred in RFC2217 mode. For those not familiar with RFC 2217 (the Telnet COM Port Control Option), the text of the actual RFC (Request For Comments) is available at www.faqs.org/rfcs/rfc2217.html or at any number of other sites.

This mode opens an Ether-Serial Link 8™ port when a TCP connection is established to the "local port". Port settings are embedded in data stream in accordance with RFC 2217.

Applications: UNIX systems and other platforms that have RFC 2217 Telnet capability can access and control the serial COM port of the Ether-Serial Link 8™.



Data Connect Mode

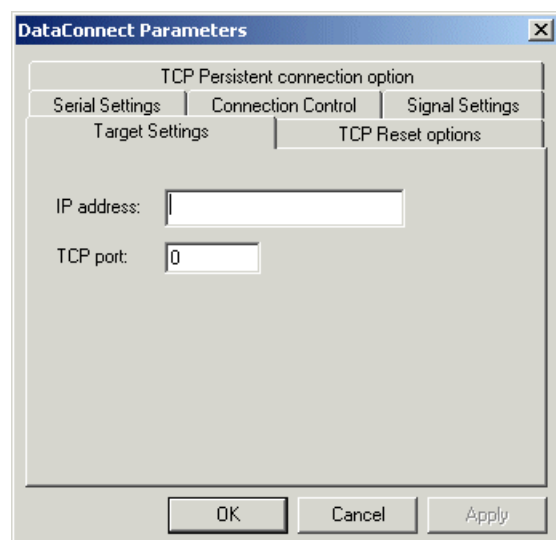
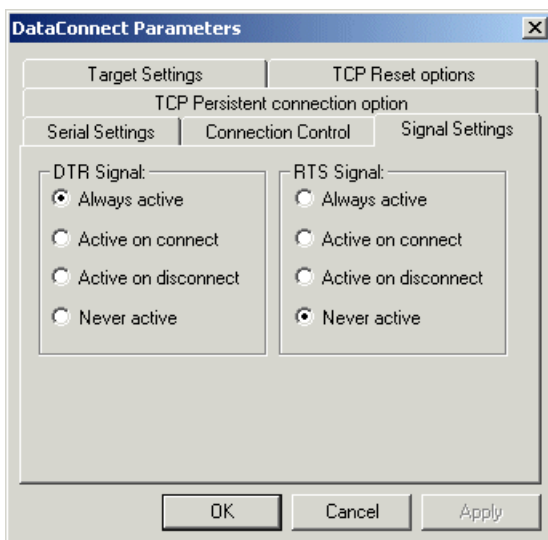
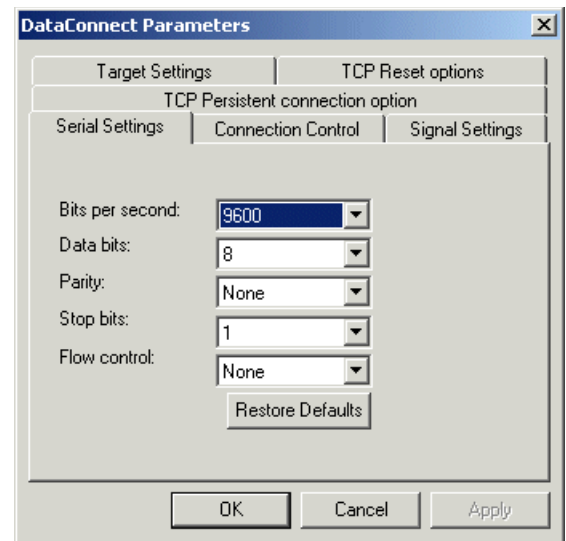
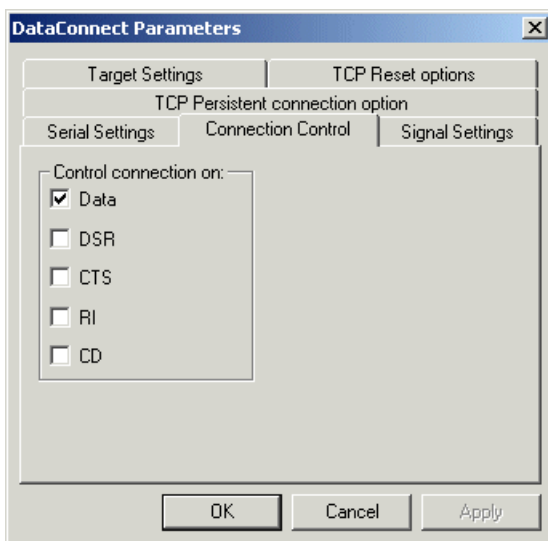
Data Connect mode combines Raw Client mode and Raw Server Mode. In this mode, the Ether-Serial Link 8™ will either initiate a TCP connection when activity is detected at the serial port, or it will receive TCP packetized serial data from the network port when an outside client connects to it.

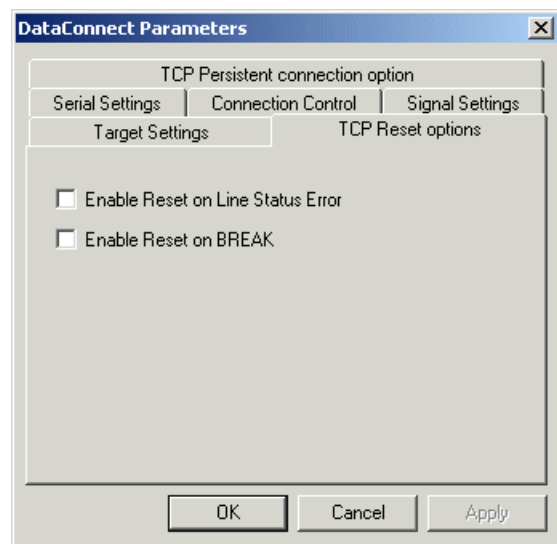
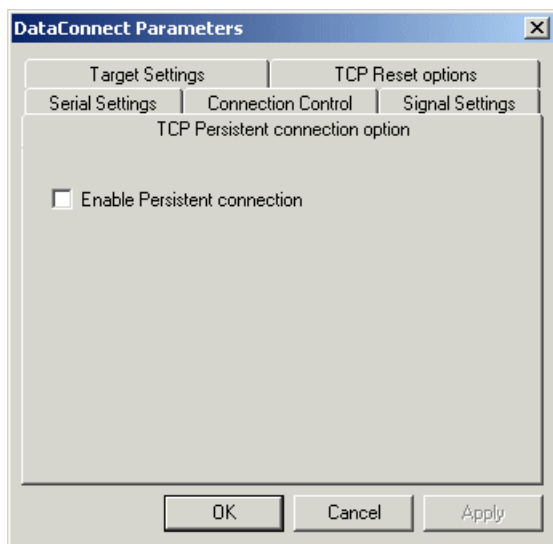
The configuration parameters for this mode combine all the parameters found in Raw Client and Raw Server modes (see above for details). In Data Connect mode only transmit (Tx) and receive (Rx) lines are active. However, control lines can be set using the "Connection Control" tab.

With two Ether-Serial Link 8s™ in this mode placed "back to back," the connection between them becomes in effect a cable extender over an Ethernet connection.

The TCP connection can be set to close on two conditions: a status error at the serial port (such as a parity error, buffer overrun, cable disconnection, etc.), or when a BREAK is sent to the serial port. By default these conditions are disabled.

Applications: Data connect mode provides a serial-to-serial communication link that would not be practicable to implement as a directly-wired link; it can replace serial cables with an Ethernet connection.





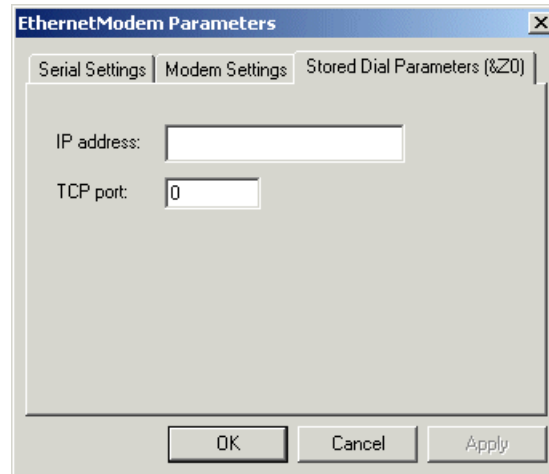
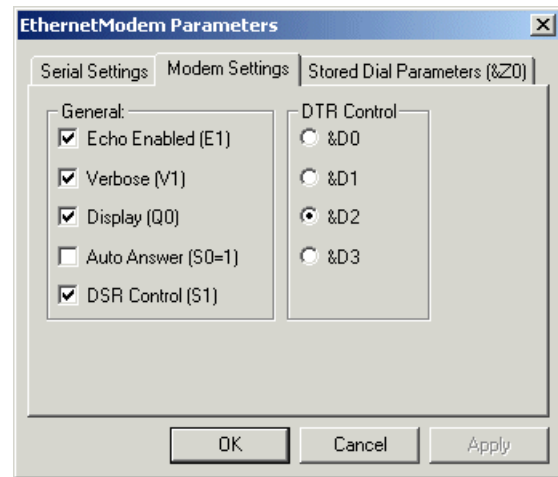
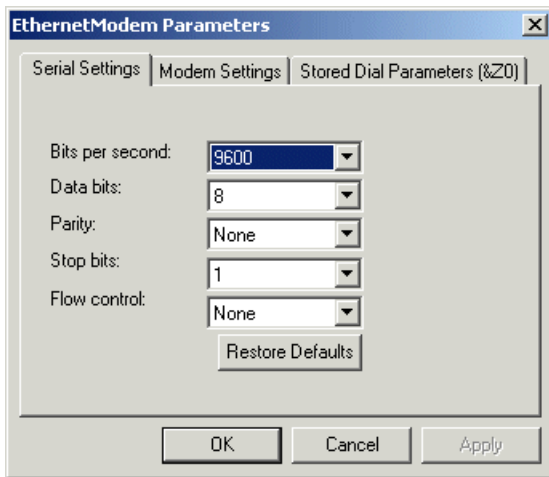
Ethernet Modem Mode

This mode allows Data Terminal Equipment (DTE) to control the Ether-Serial Link 8™ using the conventional modem "AT" command set. In this mode, a DTE user is able to "dial" an IP address and TCP port. Incoming TCP connections are handled under AT command set rules.

The standard serial port settings for bits per second, data bits, parity, stop bits, and flow control are available for configuration, and should be set to match the DTE.

Modem settings include ECHO Enabled (E1), Result Codes Format Verbose (V1), Result Codes Display Return (Q0), Auto answer (S0=1), DSR Control (&S1). Modem DTR control can be set to &D0, &D1, &D2, or &D3.

Applications: To provide the standard "AT" command interface to user applications that wish to communicate with devices in an Ethernet environment. Remote console management that looks for AT interfacing can use this application.



Ethernet Modem mode operation: Ether-Serial Link 8™ port as a modem

Procedure:

1. Place the serial COM port into Ethernet Modem mode (via Telnet IP:23, Web page IP:80, or in the *Ether-Link Manager*™). Note: the factory default IP for the WiFi ESLEther-Serial Link 8™ is 192.168.0.35.
2. The serial port behaves like a "universal" HAYES-type modem to the device connected at the serial port. The device receives the expected modem replies to the "AT commands" sent, when communicating with the serial (modem) port.

General "AT" Commands:

The "AT" commands direct a modem to dial, answer, hang up, and perform other communication tasks. The **commands** are preceded by **AT**, and followed by <cr> (ie. ATcmdCR). The only exception is for the +++ sequence, which is used to **place modem into command mode**.

The modem **must be in command mode to accept AT commands**. Any command sent to the modem while it is in the transmission (CONNECTed) mode **is passed as data**.

The following command set is supported by the serial (modem) port of the Ether-Serial Link 8™:

Command	Description	Parameters
AT	The sequence AT followed by <CR>, returns OK, indicating that the serial port is in modem mode.	
ATA	Answer. After this command has been entered, the modem is placed into the answer mode : if an incoming RING is received, the modem will CONNECT with the incoming client. The ATA command is used to "answer" an incoming RING, which results in a CONNECT. If ATA is entered, and there is no incoming RING within 5 seconds, a timeout will occur, a NO CARRIER message will be displayed, and the modem will remain in command mode. NOTE: To place the modem into " auto-answer " mode, set the S0 register for a non-zero value (ie. ATS0=1 and AT&W to save).	
ATDstring	Dial. Modem makes a connection to the IP address and port indicated by the string.	string = aaa.bbb.ccc.ddd:pppp
ATDS=n	Dial Stored. Modem makes a connection to the stored IP and port address. To store an IP:Port, use AT&Z0="IP:Port" Note re ATD... commands: if the destination IP:Port does not accept the connection within 25-30 seconds, a NO CARRIER message will be displayed, and the modem will remain in command mode.	n = 0 remote location
ATEn	Echo. Host commands are echoed.	n = 0 disable echo n = 1 enable echo (default)
ATH or ATH0	(GO) on HOOK. Close the connection. Enter the COMMAND mode using "+++", then enter ATH to close the connection.	n = 0 close the connection
ATIn	Inquiry. Displays information about the modem.	n = 0 device name n = 1 details of unit n = 2 more detailed + IP n = 3 all info plus profile
ATO	Go Online. Returns from command mode to an active connection (if one was previously established).	
ATQn	Display Result Codes. A "result" can be output after each command. Also see ATVn for format of result.	n = 0 display result n = 1 do not display result


Command	Description	Parameters																																													
ATSr=n	Set Register. Set value of register r to n. Note: only "S0" can be set for 0 or non zero. All others are fixed.	r = register number [r < 14] n = value to assign																																													
	<table> <tr> <th><u>"Sr" Register</u></th><th><u>"n" Value (default)</u></th><th><u>Purpose</u></th></tr> <tr> <td>S0</td><td>0</td><td>auto-answer disabled = 0 auto-answer enabled = non-zero</td></tr> <tr> <td>S1</td><td>0</td><td>not used</td></tr> <tr> <td>S2</td><td>43</td><td>escape to command mode char "+"</td></tr> <tr> <td>S3</td><td>13</td><td><CR> character. Fixed.</td></tr> <tr> <td>S4</td><td>10</td><td><LF> character. Fixed.</td></tr> <tr> <td>S5</td><td>8</td><td>backspace character defined</td></tr> <tr> <td>S6</td><td>3</td><td>not used</td></tr> <tr> <td>S7</td><td>60</td><td>not used</td></tr> <tr> <td>S8</td><td>2</td><td>not used</td></tr> <tr> <td>S9</td><td>6</td><td>not used</td></tr> <tr> <td>S10</td><td>7</td><td>not used</td></tr> <tr> <td>S11</td><td>70</td><td>not used</td></tr> <tr> <td>S12</td><td>50</td><td>guard time in 20 ms increments</td></tr> <tr> <td>S13</td><td>0</td><td>not used</td></tr> </table>	<u>"Sr" Register</u>	<u>"n" Value (default)</u>	<u>Purpose</u>	S0	0	auto-answer disabled = 0 auto-answer enabled = non-zero	S1	0	not used	S2	43	escape to command mode char "+"	S3	13	<CR> character. Fixed.	S4	10	<LF> character. Fixed.	S5	8	backspace character defined	S6	3	not used	S7	60	not used	S8	2	not used	S9	6	not used	S10	7	not used	S11	70	not used	S12	50	guard time in 20 ms increments	S13	0	not used	
<u>"Sr" Register</u>	<u>"n" Value (default)</u>	<u>Purpose</u>																																													
S0	0	auto-answer disabled = 0 auto-answer enabled = non-zero																																													
S1	0	not used																																													
S2	43	escape to command mode char "+"																																													
S3	13	<CR> character. Fixed.																																													
S4	10	<LF> character. Fixed.																																													
S5	8	backspace character defined																																													
S6	3	not used																																													
S7	60	not used																																													
S8	2	not used																																													
S9	6	not used																																													
S10	7	not used																																													
S11	70	not used																																													
S12	50	guard time in 20 ms increments																																													
S13	0	not used																																													
ATSr?	Display Register. Value of register r. Individual "S" register values can be obtained.	r = register number																																													
ATVn	Format of Result Codes. Note: text output is: <CR><LF>text<CR><LF> Note: numeric output is: number<CR>	n = 0 numeric form n = 1 text form																																													
	<table> <tr> <th><u>Text Output</u></th><th><u>Numeric</u></th><th><u>Meaning</u></th></tr> <tr> <td>OK</td><td>0</td><td>command executed</td></tr> <tr> <td>CONNECT</td><td>1</td><td>connection established</td></tr> <tr> <td>RING</td><td>2</td><td>connection is being requested</td></tr> <tr> <td>NO CARRIER</td><td>3</td><td>connection broken or not made</td></tr> <tr> <td>ERROR</td><td>4</td><td>illegal command</td></tr> </table>	<u>Text Output</u>	<u>Numeric</u>	<u>Meaning</u>	OK	0	command executed	CONNECT	1	connection established	RING	2	connection is being requested	NO CARRIER	3	connection broken or not made	ERROR	4	illegal command																												
<u>Text Output</u>	<u>Numeric</u>	<u>Meaning</u>																																													
OK	0	command executed																																													
CONNECT	1	connection established																																													
RING	2	connection is being requested																																													
NO CARRIER	3	connection broken or not made																																													
ERROR	4	illegal command																																													
ATZ	Reset. Close any open connections, and reset the S registers to the saved values.																																														
AT&Cn	DCD Control. [as Output].	n = 0 always active n = 1 follows connect status																																													
AT&Dn	DTR Control. [as Input].	n = 0 ignore n = 1 on-to-off: go to command mode & maintain the connection. n = 2 on-to-off: go to command mode & close the connection. n = 3 on-to-off: go to command mode, close connection & do Reset.																																													

Command	Description	Parameters
AT&F	Load Factory Settings.	<p>Default parameters for commands and parameters are set:</p> <p>Serial Port: 9600 8-data no parity 1-stop bit no flow control</p> <p>Address of remote host: 0.0.0.0:0</p> <p>Auto-Answer is disabled: S0 register = 0</p> <p>Command line echo is enabled. ATE1</p> <p>Result codes are displayed as text. ATQ1, ATV1</p> <p>DCD line follows connection status [active if connected]. AT&C1</p> <p>DTR control: if on-to-off, then go to command mode and close connection. AT&D2</p> <p>DSR line is always active. AT&S1</p>
AT&Sn	DSR Control.	<p>n = 0 set DSR always active</p> <p>n = 1 follows connection status.</p>
AT&V	View Profile Settings. Displays the S-register values, stored IP:Port of remote host, serial port and control line settings.	
AT&Z?	Display Address Settings. Displays the stored IP:Port for the remote host.	
AT&Z0=s	Store Address Settings. Stores the IP:Port number for the remote host.	
+++	Escape from the active connection to the modem command line mode. Three consecutive "+" characters will place the modem into command mode. The first two "+" characters will be transmitted to the remote host on the link, third "+" character will place the modem into command mode – the third character is not transmitted to the remote host. The connection to the remote host is placed "on-hold" when the third "+" character is keyed in. No further data will be transmitted unless the transmission mode is re-enabled.	<p>The follow-on options are:</p> <ul style="list-style-type: none"> – use the ATO command to re-enable transmission to remote host – use the ATH command to terminate the connection – use the ATZ command to terminate the connection, and reset parameters to stored settings.

Phone to IP references and settings (web browser interface only):

LAVA Ether Serial Link Configuration :: Modem Mode Serial Port Phone to IP References - Microsoft Internet Explorer

File Edit View Favorites Tools Help

 | [log out](#) |

Modem Mode Serial Port 1 Phone to IP References

Local TCP port: 4098

N	Phone:	IP + Port:
1	<input type="text"/>	<input type="text"/>
2	<input type="text"/>	<input type="text"/>
3	<input type="text"/>	<input type="text"/>
4	<input type="text"/>	<input type="text"/>
5	<input type="text"/>	<input type="text"/>

Connect message Delay msec

First data Delay msec

Retry period sec

Retry total

Lava Technical Support www.lavalink.com
Tel: 416.674.5942, Fax: 416.674.8262
E-mail Tech Support: tech@lavalink.com

Done Internet

The phone to IP references table enables a user to map a series of phone numbers to IP:port numbers. This table is particularly useful when an application addresses its data output to a conventional POTS modem using a telephone number, and that phone number input either cannot be used to hold an IP: port number address or the IP:port number address is too many characters for the software application to manage.

The phone to IP references configuration screen also provides settings for delays and retries that can be increased to give needed latencies to the modem or application to allow for robust connections over a WAN.

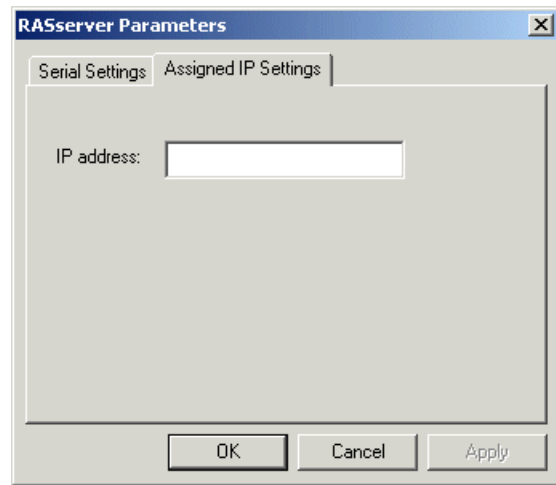
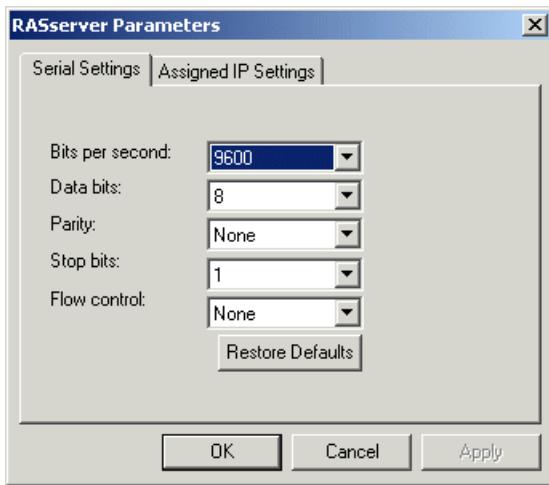
RAS Server Mode

Windows-based devices that have Remote Access Services (RAS) client capability but are not equipped with a direct network interface can access the network through a serial port using the Point-to-Point Protocol (PPP).

The serial port of the RAS client device is attached to the serial port of the Ether-Serial Link™ Ether-Serial Link 8™ Ether-Serial Link 16™ Quatech SSE-190DeCOMACCES I/O eNETNETRS232Serial Device Server, configured in RAS Server mode. The RAS negotiations are conducted between the RAS client and the Ether-Serial Link™ Ether-Serial Link 8™ Ether-Serial Link 16™ Quatech SSE-190DeCOMACCES I/O eNETNETRS232Serial Device Server RAS server.

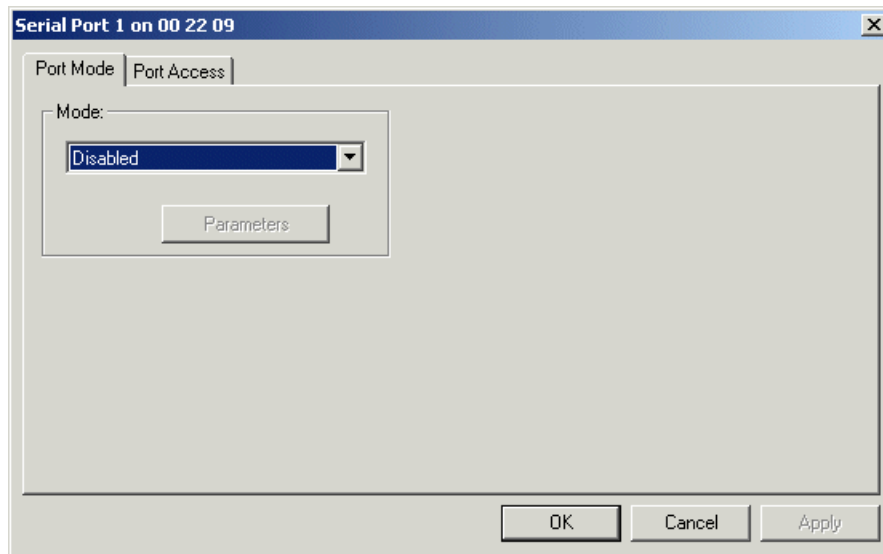
In the initial negotiations between the RAS client and the Ether-Serial Link™ Ether-Serial Link 8™ Ether-Serial Link 16™ Quatech SSE-190DeCOMACCES I/O eNETNETRS232Serial Device Server, an IP address (configured by user) is assigned to the RAS client, which is used for all Ethernet communications related to the RAS client.

Applications: Windows CE embedded systems, Palm type units, or other portable data acquisition devices that may need access to a TCP/IP-Ethernet environment, and have PPP capability, but do not have a Ethernet port, can be connected to the serial port of an Ether-Serial Link™ Ether-Serial Link 8™ Ether-Serial Link 16™ Quatech SSE-190DeCOMACCES I/O eNETNETRS232Serial Device Server.



Disabled Mode

This mode simply disables a port; it has no configuration settings.



2. WAN Port configuration

Enter the IP address and TCP port number for WAN port configuration using this feature. Ensure that the IP address does not conflict with an IP address also in use on the local area network.

The WAN activation is normally used to enumerate a remote serial port as a local COM port on the PC, where the remote serial port is located on a separate network (i.e., different LAN, over the Internet).

To create a WAN COM port enumeration, the target COM port must not be on-line on the LAN during enumeration. After enumeration, the Ether-Serial Link 8™ can be placed on-line on the LAN. WAN-enumerated COM ports will communicate with the remote COM ports on the LAN.

3. Passwords/Notes on Security

By factory default, the Ether-Serial Link 8™ has passwords assigned (one for the administrator, and one for each of the physical serial ports). Passwords are case sensitive. The factory default administrator password is "admin". The factory default port passwords are "port1" for port one, "port2" for port 2, and so on. It is strongly recommended that new passwords be configured if the Ether-Serial Link 8™ is to be used in a multi-user situation, even in small offices.

Simple security can aid network users and administrators by preventing accidental changes that could prove detrimental to network performance.

Three basic levels of security exist:

1. "Administrator" level
2. "Port" level
3. "Access" level (discussed in the next section)

The Ether-Serial Link 8™ recognizes a single password for each device, plus an additional, unique password for each device's port.

The administrator has complete access and control over the Ether-Serial Link 8™. The administrator can assign access and limit control over ports to the other security levels.

The port user can change port settings (baud rate, driver mode, etc) as may be permitted by the administrator. Ports may be accessed, but not changed without a password. The port password can be entered using either an html browser interface, or the Manager program (Windows).

Using the browser interface, enter the password from the "home page" of the Ether-Serial Link 8™. If you enter the correct administrator password, you will automatically be directed to the Administrator's Menu.

If you enter a correct port password, you will automatically be directed to the Port Configuration Menu.

Several ports may share the same password.

An empty password field means the password is NULL. If a port level password has been set, but no administrator password has been set, the correct administrator password must be entered (that is, NULL) to log on with administrator rights, i.e. leave password empty and click the CONFIGURE button. **Note: If an administrator password has not been set, port level passwords (should they exist) will not restrict users from changing port settings.**

***THIS HOLDS TRUE EVEN IF PASSWORDS HAVE BEEN SET FOR PORT ACCESS,
BUT NOT ADMINISTRATOR ACCESS***

Using the Manager application, enter the password by right-clicking" on the Serial Device Server you wish to manage. Administrator passwords apply to Ether-Serial Link 8™ "boxes" (shown in the left-hand pane of the Manager). Port passwords apply to Ether-Serial Link 8™ port(s) (shown in the right-hand pane of the Manager).

Password icons indicating locked or unlocked status appear to the left of the particular device. If the icon is a lock, it means that the device is locked and you must enter the correct password to access the device. An icon representing a key indicates an unlocked port or device.

To enter the correct password, right-click on the device, choose "unlock," and enter the correct password in the popup window.

An Administrator may grant or restrict access to individual ports by IP address, or IP range.

4. Port access restrictions

An administrator can set port access on any port by specifying ranges of IP addresses to either allow or disallow access to a given serial port. Additionally, this screen indicates the state of user rights such as whether a user can change a port's mode, reset a port, or change a port's password.

The image shows a Windows-style configuration window titled "Serial Port 1 on 00 22 09". It has two tabs: "Port Mode" and "Port Access", with "Port Access" currently selected. The window is divided into several sections:

- User Rights:** A group box containing three checkboxes: "Change port mode" (checked), "Reset port" (unchecked), and "Change password" (checked).
- Network Settings:** A group box containing a "TCP Port" label and a text input field with the value "4098".
- IP Address Filter:** A section with a dropdown menu set to "Disabled". Below it are five rows, each representing a filter rule. Each row consists of a "Disabled" dropdown, the text "IP addresses from", a four-part IP address input (all zeros), the text "to", and another four-part IP address input (all zeros).


At the bottom right of the window are three buttons: "OK", "Cancel", and "Apply".

5. Advanced serial port settings

The web browser configuration provides additional serial port settings to enable the user to purge or not purge serial and TCP buffers in the UART. Generally, these can be left to purge (the default); for applications where it is essential that data not be lost by buffer purging, this option can be enabled.

LAVA Ether Serial Link Configuration :: Mode Serial Port Settings - Microsoft Internet Explorer

File Edit View Favorites Tools Help

 | [log out](#) |

Advanced Serial Port 1 Settings

Local TCP port: 4098

Advanced Port Settings:

Transmit FIFO Trigger:	16
Interchar delay:	0 msec
Don't purge serial buffers:	<input type="checkbox"/>
Don't purge TCP buffers:	<input type="checkbox"/>

Lava Technical Support www.lavalink.com
Tel: 416.674.5942, Fax: 416.674.8262
E-mail Tech Support: tech@lavalink.com

Done Internet

6. Port reset

To reset a serial port, when in the *Ether-Link Manager*™, right-click on the serial port and select RESET from drop down menu.

Each serial port can be reset without disturbing the other serial ports on the Ether-Serial Link 8™. The set/stored operating settings for the serial port are not lost/changed after a reset. A serial port reset will also occur if operating parameter settings are changed. This is the case if after entering or viewing the settings the OK or Submit function is used. If the serial port is in use, the communications at that port will be interrupted; therefore, the user should keep this in mind when resetting the port. Options to restrict port resetting are provided.

7. Device reboot

To reboot the Ether-Serial Link 8™, when in the *Ether-Link Manager™*, right-click on the device and select Advanced|Reboot.

This function will fully reboot the Ether-Serial Link 8™, including a reset of all serial ports. The set/stored operating settings for the network and serial ports are not lost/changed after a reboot. A reboot will occur if the network parameter settings are changed. This is the case if, after entering or viewing the settings, the OK or Submit function is used. If serial ports are in use, the communications at those ports will be interrupted; therefore, the user should keep this in mind when rebooting the device.

8. Reset to factory defaults

Devices can be easily reset to factory defaults using the following methods:

Software reset to factory defaults

Using the *Manager* application, provided the administrative password to the device is known. Resetting the device to factory defaults will remove all user-configured settings, including port and network settings, access restrictions, and passwords. The device will be restored with factory default passwords in effect.

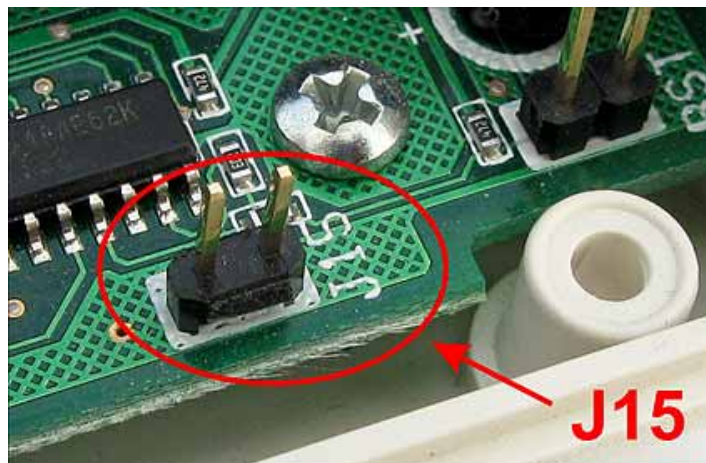
To reset to factory defaults using the *Manager*, right-click on the device icon in the left side of the *Manager*, and from the pop-up menu that appears, choose "Reset device".

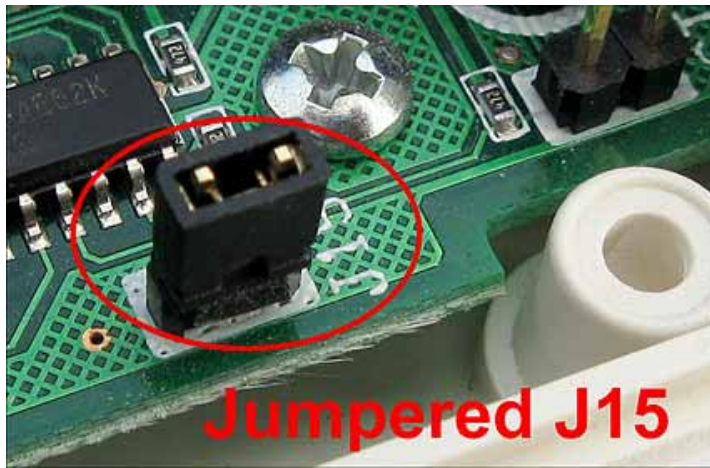
Hardware reset to factory defaults

The hardware reset does the same thing as the software reset. It is useful when the password to the device is not known or the device is locked up and cannot be successfully restarted by cycling its power. As with the software method of factory reset, resetting the device to factory defaults using a hardware reset will remove all user-configured settings, including port and network settings, access restrictions, and passwords. The device will be restored with factory default passwords in effect.

To reset using a hardware reset:

1. Disconnect power from the device.
2. Turn the device upside down and remove the four black screws that hold the enclosure shut.
3. Remove the lid of the enclosure.
4. On the main board of the device, locate the jumper marked "J15". The location of this jumper might not be precisely as pictured below, depending on the particular device. **Note:** Do not use the jumper pair identified as "RST".
5. Short the two pins of jumper pair J15 with either a jumper, a screwdriver, or other metallic conductor.
6. Leaving the pins shorted, power up the device. Allow 20 seconds for a full power-up cycle.
7. Disconnect power from the device.
8. Remove the jumper short.
9. Replace the enclosure lid and reinsert the four screws.
10. Power up the device. It will now be reset to factory defaults.





9. Subnet configuration with the Ether-Serial Link 8

If the Ether-Serial Link 8™ is on a different subnet from a client station that is attempting to access it, the Ether-Serial Link 8™ will be visible in an instance of the *Ether-Link Manager*™ running on the the client station, and its ports can be activated on that client station, but applications running on the client station will not be able to open a serial port on the Ether-Serial Link 8™.

For example, if the IP address of the Ether-Serial Link 8™ is 192.168.0.35 and the IP address of the client station is 192.168.1.1, the two devices are on different subnets (as indicated by the difference between the "0" and the "1" in the third portion of the two IP addresses).

Two solutions exist:

1. change the subnet of the either the Ether-Serial Link 8™ or the client station so that they are both on the same subnet or,
2. change the subnet mask of the Ether-Serial Link 8™ to encompass both subnets. By default, the Ether-Serial Link 8™ has its subnet mask set to 255.255.255.0. This setting excludes all but the fourth portion of the IP address when assessing IP addresses. In the example above, a subnet mask of 255.255.0.0 will include the Ether-Serial Link 8™ in both subnets.

10. Re-establishing a TCP connection with the Ether-Serial Link 8™

The nature of TCP socket connections means that a TCP socket established with a host will hold that TCP socket "open" even when active communication has been broken. This situation might occur, for example, when an Ether-Serial Link 8™ serial port is connected in Raw Server mode with a host PC that is rebooted without the TCP connection to the Ether-Serial Link 8™ being properly closed. While the TCP connection continues to be held open, further TCP connections cannot be established. This "lockout" is normal TCP behaviour designed to allow communications to be smoothly re-established between a TCP client and server.

In the circumstance where connection to an Ether-Serial Link 8™ is broken, it may be desirable to allow another client to access the Ether-Serial Link 8™ port. To prevent a "lock-out" from persisting, the Ether-Serial Link 8™ monitors the TCP port for an active and valid connection every time that a TCP connection request is attempted.

If the connection between the Ether-Serial Link 8™ and a client has been "broken," then the next client attempting to connect to the serial port will need to make **two** attempts to connect. The first attempt will cause the Ether-Serial Link 8™ firmware to check for the validity of the previously-established TCP connection. If the connection is determined to be "broken," then the Ether-Serial Link 8™ will "properly" close the TCP socket. At that point a second connection attempt can be accepted and set up as a new TCP socket. The time interval between connection attempts should be in the order of about 10 seconds.

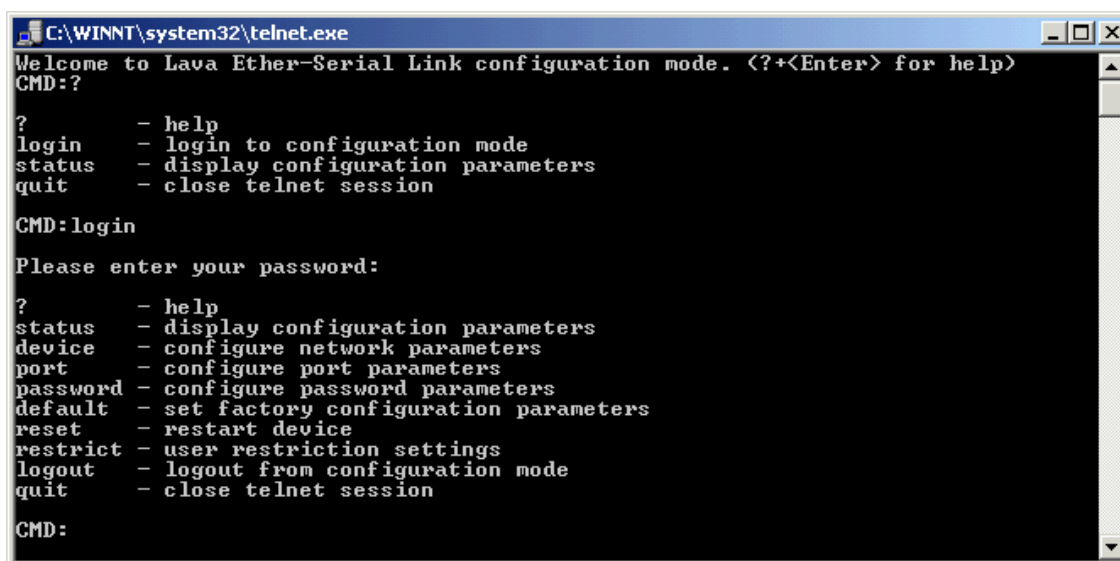
Note for application programmers: When writing connection code, make the attempt to connect several times, in the event that the previous TCP connection with the Ether-Serial Link 8™ serial port was not closed properly under TCP rules.

11. Configuring the Ether-Serial Link 8 using Telnet

1. Open a Telnet session with local echo on and carriage return/line feed on.

Windows example

1. Go to Start|Run, type "telnet", and click on "OK".
2. A Telnet console opens. At the Telnet prompt, set local echo on by typing "set local_echo" and pressing <Enter>. Set carriage return and line feed on by typing "set crlf" and pressing <Enter>. NOTE: These commands may differ slightly depending on the Telnet client you are using.
3. Open a Telnet session to the Ether-Serial Link 8™. At the Telnet prompt, type ""open [IP address]" and press <Enter>, where [IP address] is the address of the Ether-Serial Link 8™ with which you wish to communicate. The Telnet configuration screen will open.
4. In the Telnet console, you can configure device, port, and password settings, restore factory defaults, restart the device, or query the device to display its current status.



```
C:\WINNT\system32\telnet.exe
Welcome to Lava Ether-Serial Link configuration mode. (?+<Enter> for help)
CMD:?

?      - help
login  - login to configuration mode
status - display configuration parameters
quit   - close telnet session

CMD:login

Please enter your password:

?      - help
status - display configuration parameters
device - configure network parameters
port   - configure port parameters
password - configure password parameters
default - set factory configuration parameters
reset  - restart device
restrict - user restriction settings
logout - logout from configuration mode
quit   - close telnet session

CMD:
```

2. Configure the Ether-Serial Link 8.

The following network and port settings can be configured in a Telnet session:

Device settings (for the Ether-Serial Link 8 device):

- IP address
- Net mask
- Gateway
- NetBios name (Device Name)
- DHCP mode
- Device password

Port settings (for each Ether-Serial Link 8 port individually):

- Port mode (see ADVANCED readme file for description of the various port modes)
- TCP port number
- Port mode settings (see ADVANCED readme file for details on port mode settings)
- Port access
- Port passwords
- Port reset
- Port status

After changing device settings, the Ether-Serial Link 8™ will be reset. Changes to port settings are implemented without resetting the Ether-Serial Link 8™.

